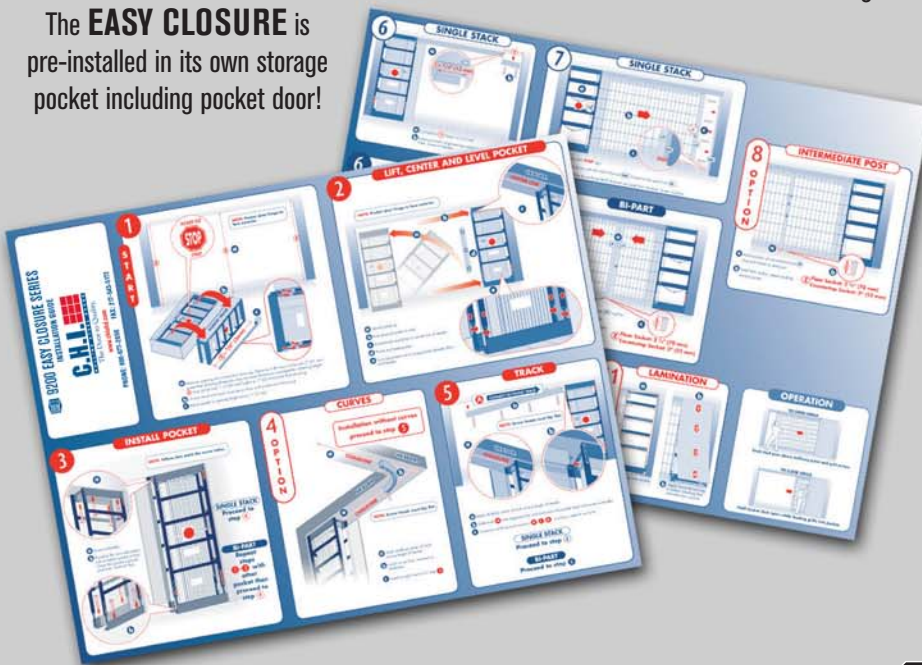


# 9200 EASY CLOSURE SERIES



The **EASY CLOSURE** is pre-installed in its own storage pocket including pocket door!

The **EASY CLOSURE** is labeled with instructions and comes with an **EASY** to follow installation guide.



**EASY** pocket adjusts on-site to fit your opening.



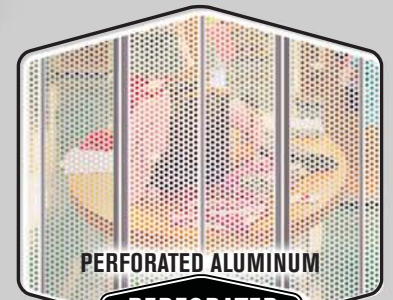
SOLID ALUMINUM

**SOLID**



OPEN-AIR

**ROD LINK**



PERFORATED ALUMINUM

**PERFORATED**

Installs within footprint of six-inch stud wall - no additional pocket space required!

So simple to install anyone can do it in an hour!

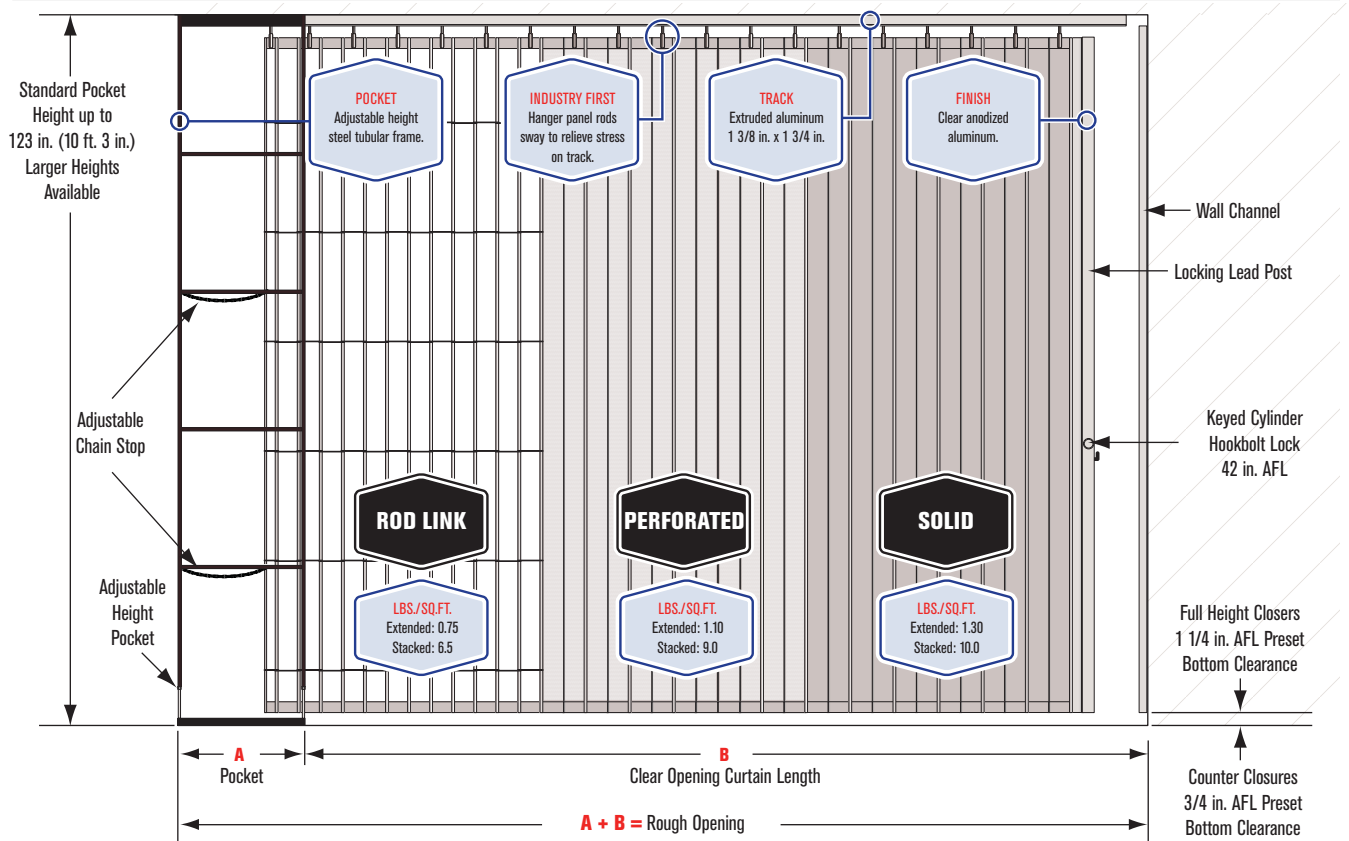
Two-year Limited Warranty!

chiod.com



The Door to Quality.

## STANDARD FEATURES



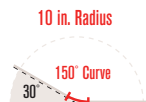
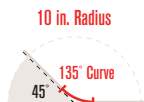
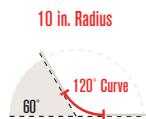
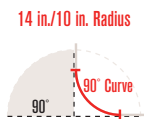
## STANDARD STRAIGHT LAYOUT POCKET DIMENSIONS

A + B Rough Opening Width	
A Pocket	B Clear Opening Curtain Length
11 in.	up to 60 in. (5 ft. 0 in.)
15 1/2 in.	up to 98 in. (8 ft. 2 in.)
20 in.	up to 120 in. (10 ft. 0 in.)
25 in.	up to 144 in. (12 ft. 0 in.)
31 in.	up to 205 in. (17 ft. 1 in.)
36 in.	up to 240 in. (20ft. 0 in.)

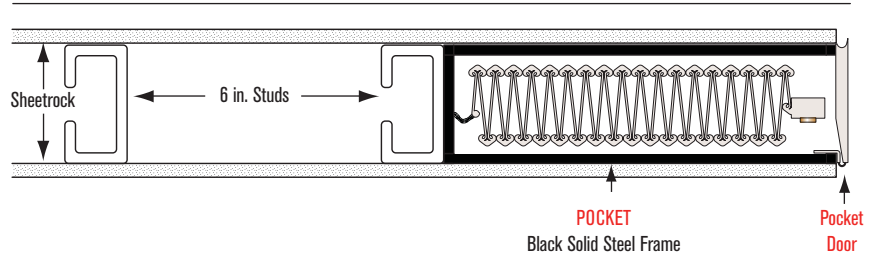
Consult factory for layouts with curves.  
Larger widths accommodated with custom pockets.

## OPTIONAL FEATURES

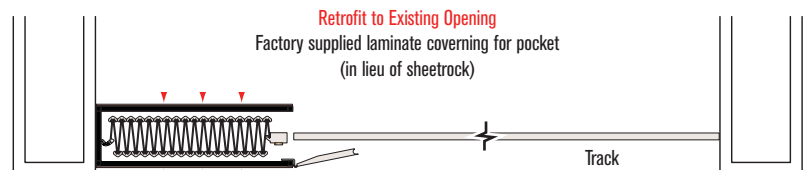
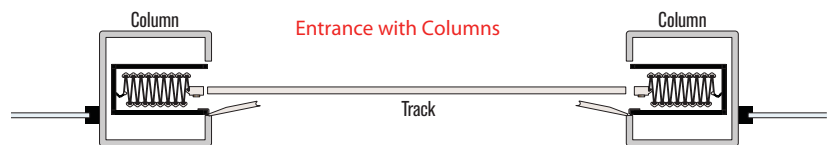
- Interior thumb turn in lieu of keyed cylinder.
- Protection panels required on Easy Grille.
- Top and bottom locking lead post.
- Bi-parting closure (dual pockets).
- Factory supplied laminate pocket covering.
- Standard curves and custom radius curves available.



## POCKET DETAIL IN 6 INCH



## TYPICAL LAYOUTS



VISIT YOUR DOOR PROFESSIONAL AT:



The Door to Quality.

1485 Sunrise Drive • Arthur, Illinois 61911 • tel 800.677.2650 • fax 217.543.5172